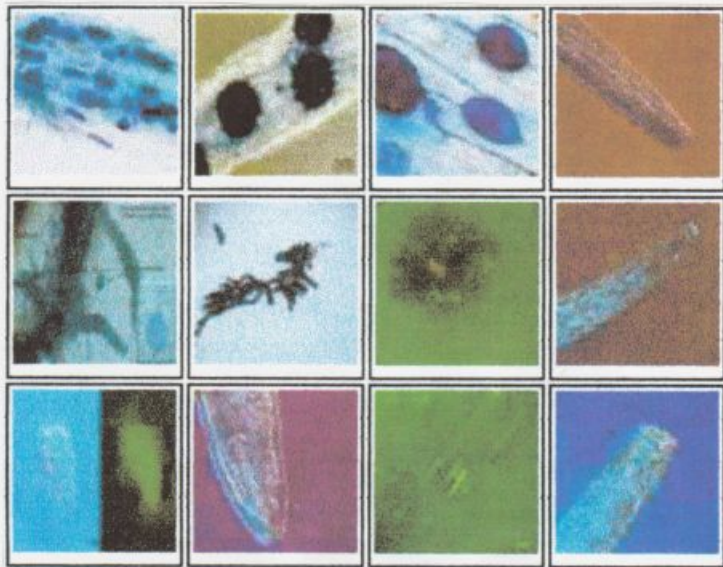

Microbes feed off each other (see diag.1) giving free supplies of nutrition in a safe steady stream. They aerate the soil promoting deeper root penetration. They are essential in developing productive soil. Their activity is dependent on the supply of organic inputs.



* In terms of life's total weight on Planet Earth *

- Humans and Ants each amount to less than 1% = .02%
- Krill outweigh humans by a factor of 13 to 1 = .26%
- Plants outweigh humans by a factor of 3,800 to 1 = 7.60%

Microbes amount to 80% of life's total weight and if spread across the surface, would cover the entire Planet to a depth of 1.5 metres.
